



Enterprise Reporting Solution

Argos 5.2 Release Guide

Product version 5.2

Last updated 11/9/2016

Trademark, Publishing Statement, and Copyright Notice

© 1998-2016 Evisions, Inc. All rights reserved.

This software and related documentation are provided under a license agreement containing restrictions on use and disclosure and are protected by intellectual property laws. No part of this document may be reproduced, stored in or introduced into a retrieval system, or transmitted in any form or by any means (electronic, mechanical, photocopying, recording, or otherwise), or for any purpose, without the express written permission of Evisions, Inc.

The information contained herein is subject to change without notice and is not warranted to be error-free. Product features referenced herein for a period of time may not match product contents. Evisions, Inc. does not warrant that the functions contained in the software will meet your requirements or that the operation of the software will be uninterrupted or error free. Evisions, Inc. reserves the right to make changes and/or improvements in the software without notice at any time.

This software and documentation may provide access to or information on content, products, and services from third parties. Evisions, Inc. and its affiliates are not responsible for and expressly disclaim all warranties of any kind with respect to third-party content, products, and services. Evisions, Inc. and its affiliates will not be responsible for any loss, costs, or damages incurred due to your access to or use of third-party content, products, or services. Evisions, Inc. does not endorse the content or developer of any products or web sites mentioned.

All information in this guide is designed for instructional purposes only. Evisions, Inc. makes no guarantees regarding the accuracy or performance of any techniques used in this guide. Software configurations and environments may vary, and some techniques used in this guide may not operate efficiently under all configurations. This guide may contain examples of various technologies or products, which are the sole property and responsibility of their creators.

Trademarks are the property of the respective owners for any products mentioned herein.

Table of Contents

- What's New in Argos 5.2?** 4
 - MAPS and Argos Updates 4
 - Product versions 4
 - Installation 4
 - 1. Prepare test environment and ensure current backup 4
 - 2. Check for updates 4
 - 3. Allow update process to complete 5
 - 4. Verify the latest version is installed 5
- Report Writers** 6
 - Suppressing Duplicate Records in CSV and Extract Reports 6
- DataBlock Designers** 7
 - Exporting Saved Dashboard and OLAP Settings 7
- Argos 5.2 Release Notes** 8
- Getting Help** 14

What's New in Argos 5.2?

Evisions is pleased to announce the release of Argos version 5.2, which includes the following changes:

- When exporting from Argos, you now have the option to include saved dashboard settings and OLAP settings in the output file.
- Added an option to suppress printing of sequential duplicate records from CSV reports and fixed width and delimited extract reports.
- The RTF editor for banded reports now lets you edit the font color for individual characters or words within the text.
- The Web Viewer now allows DataBlock Designers to position chart legends to the top, left, or bottom of the chart instead of just the right.
- When Windows is configured to use the "Windows Classic" theme, the Argos client will no longer use themed styling. This resolves several display issues that were occurring when theming was not enabled in Windows.
- Invalid characters in report names are now automatically converted to underscores when saving the report. This resolves an issue where some reports could not be saved due to the generated filename being invalid.
- Corrected several issues with dialog boxes not displaying properly in Windows 10 environments.
- Additional enhancements and resolved issues.

Changes to MAPS that relate to Argos include:

- Resolved several issues that may have affected queries run using the native Oracle or SQL Server database drivers.

We appreciate the feedback received from all of our users. Our products would not be what they are today without your continued support. If you have any comments or suggestions, please do not hesitate to [open a HelpDesk ticket](#) and let us know.

MAPS and Argos Updates

Some of the issues fixed in this release require an update to the MAPS service as well as to Argos. We recommend upgrading both products to the latest version concurrently.

[Product versions](#)

The latest versions of MAPS and Argos included in this release are:

- Argos mapplet 5.2.0.1109/ Argos client 5.2.0.1544/ Web Viewer 5.2.0.2
- MAPS service 5.2.0.1375 / MAPS configuration 5.2.0.664 / eLauncher 5.2.0.4

Installation

[1. Prepare test environment and ensure current backup](#)

We highly recommend installing updates in a test environment before applying them to your production environment. You should make sure that a current backup is available in case of any unforeseen issues. To create a full backup of your MAPS environment, go to the **Server -> Backups** screen in MAPS and click **Backup Now**.

[2. Check for updates](#)

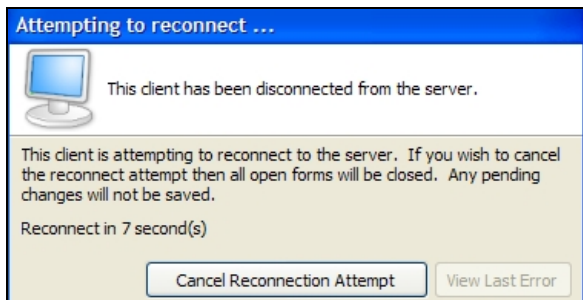
Click the **Check for Updates** button in the MAPS Configuration tool to view available updates.

If you are not already running Argos and MAPS 4.x, please refer to the [Argos 4.0 Release Guide](#) for instructions prior to proceeding with this upgrade.

It is possible to apply updates when users are on the system; however, to avoid the possibility of losing unsaved work we recommend applying updates during off hours.

3. Allow update process to complete

When applying updates to the MAPS service you will be temporarily disconnected from the server:



The update process may take a few minutes to complete. **Do NOT cancel the reconnection attempt or manually restart the server.** You will automatically be reconnected to the server once the update has been applied.

4. Verify the latest version is installed

To ensure that you are on the most current version, continue clicking the **Check for Updates** button and applying the updates until no new updates are available.

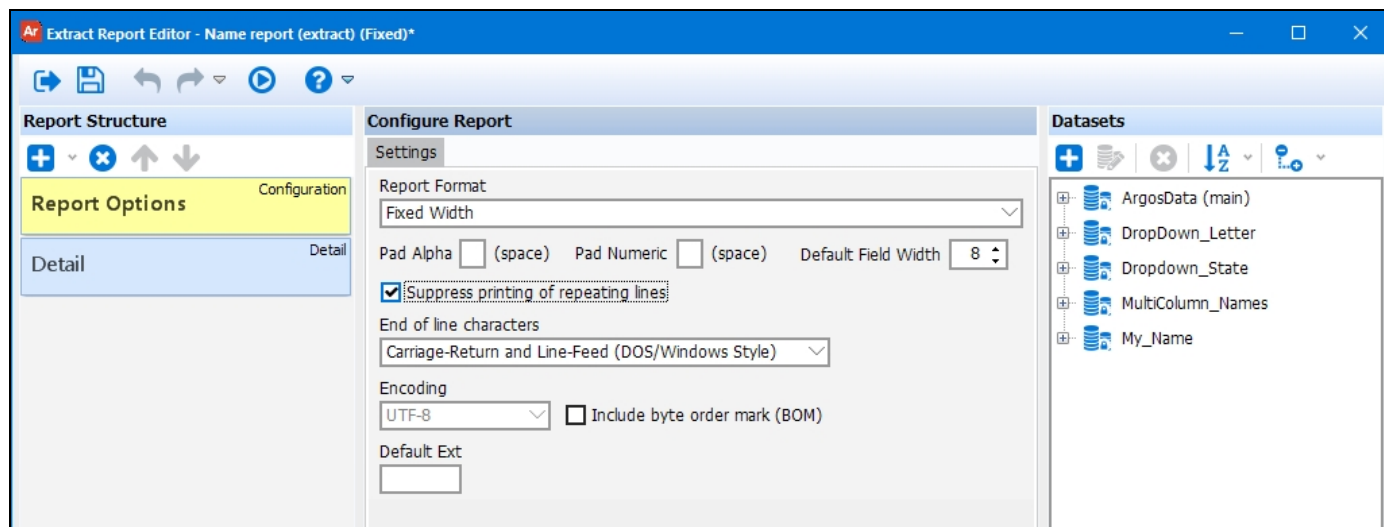
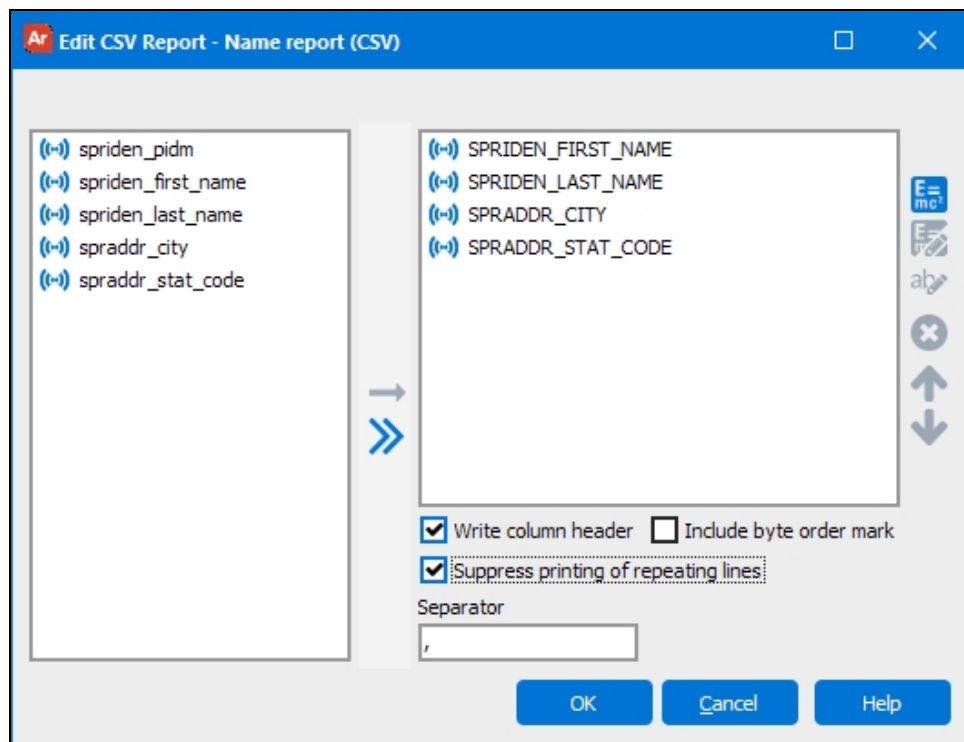
Please Provide Us with Your Feedback!

As always, we welcome any [feedback or suggestions](#) you may have. We very much appreciate your thoughts and suggestions, so please keep the great ideas coming!

Report Writers

Suppressing Duplicate Records in CSV and Extract Reports

Report Writers can now opt to filter out duplicate rows from CSV reports and fixed width and delimited extract reports. To enable this option, check the **Suppress printing of repeating lines** box when editing the report.

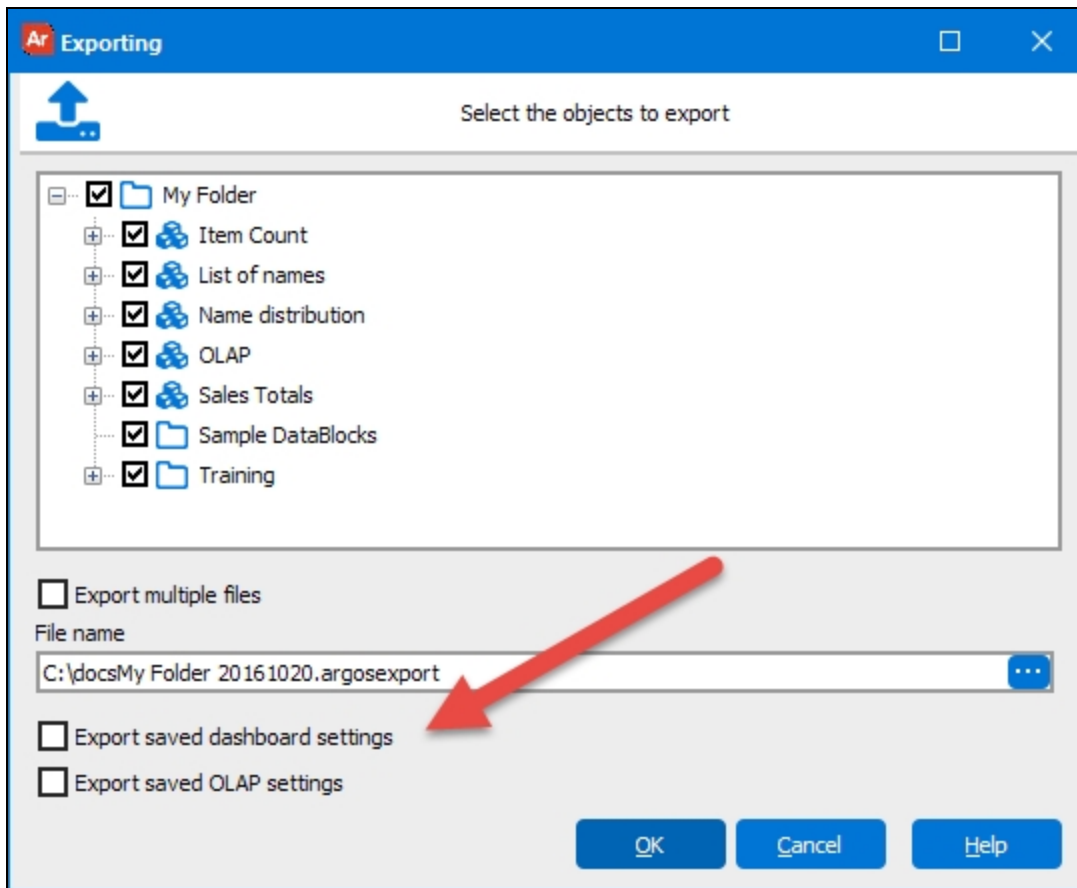


Duplicate lines will only be omitted if they are sequential. Any duplicates that appear further down the report will not be suppressed. To remove all duplicates from the report, make sure to sort the records first so that the duplicates will be grouped together.

DataBlock Designers

Exporting Saved Dashboard and OLAP Settings

When exporting from Argos, you will now see two additional checkboxes at the bottom of the export dialog that enable you to include saved dashboard settings and saved OLAP settings in the output file.



When re-importing your dashboards into Argos, these settings will be imported along with the rest of the data if you chose to include them in the output.

Note: The settings that are exported are only those settings which are visible to the user performing the export. Any private settings created by other users will not be retained. Upon import, the settings will be noted as having been created by the user who performed the import, even if they were originally shared settings that were created by a different user.

Argos 5.2 Release Notes

Argos Mapplet 5.2.0.1109 / Argos Client 5.2.0.1544 / Web Viewer 5.2.0.2
MAPS Service 5.2.0.1375 / MAPS Configuration 5.2.0.664 / eLauncher 5.2.0.4

Argos

Enhancements

Area	Description	Issue number
Banded reports	Added an option to sort the structure tree in the banded report editor according to the order that the objects are displayed on the page, in addition to alphabetical order and execution order.	AR-4312
Banded reports	Added a Font Color button to the RTF editor used within banded reports. The existing "Color" button at the bottom of the editor has been renamed to "Background Color" and controls the background color for the entire RTF field.	AR-4279
Charting	Charts in the Web Viewer now position the legend to the top, left, and bottom instead of just on the right side when a different position has been specified by the DataBlock Designer.	AR-1708
Charting	For bar and area type charts in the Web Viewer, the options for changing the data view (grouped/stacked and stacked/stream/expanded) are now located in the chart's hover menu instead of at the top of the chart.	AR-4407
Dashboards	When exporting from Argos, you now have the option to include saved dashboard settings and OLAP settings in the output file. If selected, the export will include all of the saved settings that the user performing the export has permission to view.	AR-2858
Form design	Added a "Format Band" option to the Banded Report Wizard that allows you to specify the default font options for each band.	AR-3008
LoO	Updated the icons in the Library of Objects to match the new Argos theme.	AR-3992
LoO	When adding an object to a banded report from the Library of Objects, objects will no longer be inserted outside the visible area of the band based on their original positioning.	AR-4373
PDFs	When generating a PDF of a report, the PDF Options dialog will now remember your last-used settings for items such as font embedding, author information, active hyperlinks, using images as resources, page processing, and opening after creation.	AR-2846
Reports	When running a report from a dashboard in the Web Viewer, the icons in the dropdown list now indicate whether the report is public or private.	AR-4419
Reports	Added an option to suppress printing of sequential duplicate records from CSV reports and fixed width and delimited extract reports.	AR-762
User interface	Changed the color of the title bar and text for inactive windows so that the text is more legible.	AR-4087
User interface	When creating a subquery in the visual designer, the radio buttons used to select an operation (EXISTS, IN, >, <, etc.) have been replaced by a dropdown.	AR-4263
User interface	Updated the icons that indicate when a report is private to make them easier to read.	AR-4265

Area	Description	Issue number
User interface	The option to rename a system-created dashboard now appears grayed out in the menu, since the default dashboard of a DataBlock cannot be renamed.	AR-4261
User interface	Added an option under the Tools -> Options menu that enables individual users to turn off the display of emoticons in the Notes field for Argos objects.	AR-4315
Web Viewer	Report details and notes are now visible in the Web Viewer.	AR-4296
Web Viewer	Added the Last Run Date to the DataBlock details shown in the Web Viewer, and rearranged the fields to match the layout of the details in the Argos client.	AR-4331

Resolved Issues

Area	Description	Issue number
Banded reports	When editing an RTF field within a banded report, decreasing the size of the Edit Rich Text Field window beyond the width of the toolbar caused the rightmost toolbar buttons to disappear and the options at the bottom of the window to overlap the Save and Cancel buttons.	AR-4172
Banded reports	When saving a banded report to a PDF file, using a period in the filename would truncate the portion of the name that followed the period. To resolve this issue, the file extension is now automatically included in the filename field.	AR-4293
Banded reports	The default font selected in the banded report wizard was showing as "Engravers MT" even though the actual default font used is Tahoma.	AR-4311
Banded reports	Attempting to validate a query that uses a dataset which contains a SQL variable inside a function call resulted in the error "' ' is not a valid floating point value."	AR-4402
Banded reports	Banded reports that used the "force new page" option on a child or group footer band would sometimes incorrectly omit certain records from the report.	AR-1912
Dashboards	In Argos 5.0 and 5.1, the the background color of a radio button panel was always gray in the DataBlock designer regardless of the color specified by the panel's Color property. The color displayed correctly when running or testing the DataBlock.	AR-4217
Dashboards	Setting the background of a radio button panel to certain specific colors caused the panel to appear to be outlined in a different color when editing the DataBlock.	AR-4298
Dashboards	When using an OnClick event to reset an object whose initial value was auto-selected, the reset event was clearing the variable instead of setting it back to its initial auto-selected value.	AR-1861
Dashboards	In Argos 5.0 and 5.1, the the font color of text within a list box was always black in the Argos client regardless of the color specified by the list box's Font.Color property.	AR-4241
Extract reports	When testing an extract report for a DataBlock that had no default connection specified, attempting to cancel out of the "Choose a Connection" dialog resulted in the error "TMapsSession::OpenConnection():'AConnection' is NULL".	AR-4245
Folders	When pasting or importing a folder, the folder description was not retained.	AR-4321
Notes	The character sequence "://" no longer converts to an emoticon when used in the Notes field. This resolves an issue where hyperlinks were breaking due to the "://" string in "http://".	AR-4345

Area	Description	Issue number
OLAP	When editing an OLAP cube, the text of some of the property descriptions in the General section was being truncated.	AR-4243
Queries	When adding tables in the visual designer, if a table name required quotes or bracket notation due to spaces or special characters in the name, the automatically-assigned alias for the table would omit the delimiter from the query, resulting in a syntax error when validating if the report query was later changed to free type.	AR-4153
Reports	When printing a dashboard, the icon for the Print button was missing.	AR-4101
Reports	When saving a file from within Argos using a filename that already exists in the specified location, attempting to X out of the prompt that asks whether you wish to overwrite the existing file resulted in the file being overwritten as though you had clicked "Yes".	AR-4302
Reports	Reports using multiple datasets were producing the error "Field [fieldname] does not exist" instead of letting the user know when no records were returned in cases where the master dataset did not have any fields.	AR-2017
Reports	When saving a report on a Windows 10 system, if the proposed filename already existed in the specified location, then the dialog asking whether you wish to overwrite the file was only displaying a small portion of the dialog, preventing you from selecting Yes or No.	AR-4209
Reports	Clicking the disk icon to save an Argos report when the report name included a forward slash or colon resulted in nothing happening, preventing the user from saving the report. To resolve this issue, invalid characters in the report name are now converted to underscores when saving.	AR-4211
Stability	In Argos 5.1, DataBlocks that used the Visual Designer for the report query and had a very large number of fields on any of the tabs were throwing a series of errors and exceptions relating to running out of system resources immediately upon opening the DataBlock for editing.	AR-4376
User interface	Entering large amounts of text into a report description would cause Argos to slow down significantly whenever that item was selected in the process tree.	AR-4280
User interface	When clicking on the description of a DataBlock, dashboard, or report to expand it, users who did not have permission to edit the object were unable to see its full description. The description dialog is now visible to all users, but only editable to users who have the appropriate permissions.	AR-4193
User interface	When exporting from Argos on a Windows 10 machine, the warning dialog that appears when attempting to overwrite an existing file was cut off, preventing users from clicking any buttons.	AR-4391
User interface	In the style browser for the banded report editor, folders did not have a + icon next to them to indicate when they contained other items.	AR-4446
User interface	When logging in to Argos on a Windows 10 machine, if a system message notification was present the dialog was being cut off, preventing the user from viewing the message or clicking the OK button.	AR-4336
User interface	When opening the Argos client on a Windows 10 system, the dialog notifying administrators of available updates was only displaying the upper left corner of the dialog.	AR-4287
User interface	When Windows is configured to use the "Windows Classic" theme, the Argos client will no longer use themed styling. This resolves several display issues that were occurring when theming was not enabled in Windows.	AR-4248

Area	Description	Issue number
Web Viewer	DataBlock descriptions are once again displaying in the Web Viewer.	AR-3212
Web Viewer	Users who have only "View/List Children" and "Execute" permission for a dashboard were receiving the error "JO Cannot read the property 'length' of undefined" when navigating to the DataBlock in the Web Viewer via a direct URL.	AR-4374

Enhancements

Area	Description	Issue number
CAS	CAS IDs are now required to be unique for each user. When importing users into MAPS, any duplicate CAS IDs will result in an error message for those records. When copying an individual user, the CAS ID field is blanked out and you will be prompted to enter a new CAS ID (if desired) for the new user.	MAPS-1277
CAS	MAPS now removes any blank spaces entered before or after a user's CAS identifier.	MAPS-1282
CAS	Added support for connecting to CAS servers using TLS versions 1.1 and 1.2. Previously, only version 1.0 was supported.	MAPS-1267
eLauncher	Increased the resolution of the product logos in the eLauncher.	MAPS-1214
FTP	Added support for using public/private key authentication when transmitting files via SFTP.	MAPS-1298
FTP	Added an option to the FTP Properties dialog that controls whether or not MAPS will verify the public key for an SFTP server when using key authentication. This resolves an issue where MAPS was not prompting to accept the key when connecting to a server for the first time or when the key changed.	MAPS-556
Users	On the Users screen, the Delete button is now disabled when the system Administrator user is selected.	MAPS-1254
Users	When importing or exporting users from/to a file, MAPS now supports an XML format that allows you to include specific role and group information for each user.	MAPS-1158

Resolved Issues

Area	Description	Issue number
Connections	When adding queuing rules to a data connection, if you did not specify which days the rule should be active then the rule would not save after clicking OK. To resolve this, the OK button is now disabled until you choose the day(s) that you wish the rule to be in effect.	MAPS-1230
Connections	Removed repetitive warning messages that appeared when an ADO connection string contained duplicate properties.	MAPS-1231
Connections	When using the native SQL Server database driver, the functions of the !> (not greater than) and !< (not less than) operators were reversed.	MAPS-1226
Connections	When using the native Oracle database driver, the Service Name property was not picking up the list of configured Oracle databases from the tnsnames.ora file.	MAPS-1229
Connections	When modifying an existing queuing rule for a data connection, you were able to set the Max SQL value higher than the maximum of 1024.	MAPS-1269
Connections	When using the native Oracle database driver, Unicode characters were being converted to their ANSI equivalents when executing queries. This resulted in the query returning data with missing characters, such as those required for Latin, French, Arabic, Chinese, etc.	MAPS-1240

Area	Description	Issue number
Connections	When using the native SQL Server database driver, using certain reserved characters ('!', '&', ':', '?', '{', and '}') in a query would cause the SQL to be interpreted incorrectly.	MAPS-1308
Connections	When entering the password for a native database connection on the Driver Properties screen, the password characters were not being obscured on the screen.	MAPS-1257
eLauncher	The product logos were not being centered when bypassing the eLauncher to link directly to an individual product's launch page.	MAPS-1191
Groups	Pressing Ctrl-Alt-Delete to lock the computer from the Groups screen while focus was on a group would delete the group without prompting. Pressing Ctrl-Alt-Delete no longer triggers a delete operation, and you are always prompted to confirm when deleting a group.	MAPS-1180
LDAP	When adding an LDAP group to MAPS, the description field was not being populated.	MAPS-1222
Security	When updating a license with a new institution key (for purposes of updating the name of the institution in MAPS after a name change), users were unable to log in to the MAPS applications unless their passwords were changed in MAPS immediately after applying the new license.	MAPS-1235
Stability	Under certain conditions involving simultaneous database queries run by multiple users, MAPS would produce an access violation or a "timeout waiting for write lock" error message.	MAPS-1300
Stability	Clicking the Undo button after making edits to the list of enabled SSL versions on the Server -> HTTP File Server -> Advanced Settings screen resulted in the error "An exception has occurred: SslVersionLB".	MAPS-1181
Users	When importing LDAP users from a CSV file, the email address was not being imported as it should have been when LDAPAddressOverride was set to 'Yes'.	MAPS-1239
Users	When importing or exporting users, MAPS would insert double quotes around filenames that contained spaces, preventing the file from being imported/exported.	MAPS-1218
User interface	When changing servers on the login dialog, it was possible to select no server by clicking in the white space area. The current server will now be retained unless a different server is selected.	MAPS-1245
User interface	When adding a queuing rule to a data connection, the slider for the maximum number of concurrent queries would appear offset to the right on systems with multiple monitors when the dialog appeared on a non-primary monitor.	MAPS-1227
User interface	When changing the maximum number of concurrent queries for an existing data connection queuing rule, if you enter a negative number it will now be automatically set to 0.	MAPS-1228
User interface	On the Auditing Configuration screen, the number of audit archive files to keep can no longer be set to negative numbers.	MAPS-1233

Getting Help

For information on using the software, please refer to the in-product Help, which contains detailed information on all aspects of the product.

If you are having problems with the installation or configuration, you can search our knowledge base of common issues and their resolutions at <http://helpdesk.evisions.com>. If you are unable to find the solution, submit a HelpDesk request with a detailed explanation of the problem you are experiencing.

Please do not hesitate to contact the Evisions HelpDesk if any questions or problems arise. We are here to help you and want to ensure your success.

If you find that areas of this documentation could benefit from additional detail or clarification, please let us know. We are constantly trying to improve the installation process to make it as easy as possible.